

Delaware

Energy Efficiency Jobs in America

10,914
Total Jobs

What are EE jobs?

Jobs that deliver goods and services that lower energy use by improving energy efficiency with a focus on appliances, buildings, data systems, financing, new technologies, and more.

What do EE workers do?

- **Manufacture and install** high-efficiency systems, controls, windows, insulation, and ENERGY STAR-certified appliances and products in existing and new homes, commercial and industrial buildings.
- **Design and construct** high-performance buildings such as those earning nationally recognized sustainability and environmental performance ratings.
- **Upgrade and repair** heating, air conditioning, and ventilation (HVAC) and water heating equipment.
- **Educate** property owners and managers on building improvements to unlock savings for businesses, homeowners, schools, states, municipalities, military bases, and more.
- **Analyze building data** using software to maximize energy savings through targeted performance improvements and behavioral changes.
- **Review and approve loans** to finance energy savings performance contracts to improve the comfort, health, and operational costs of buildings.

How does EE compare in Delaware?

Energy efficiency is the largest energy sector in Delaware.



TDS = Transmission, Distribution & Storage

EPG = Electric Power Generation

Nuclear (EPG & Fuels) = 19

Other* = 363

*Includes other energy subsectors such as corn ethanol, woody biomass, large hydropower, and others.

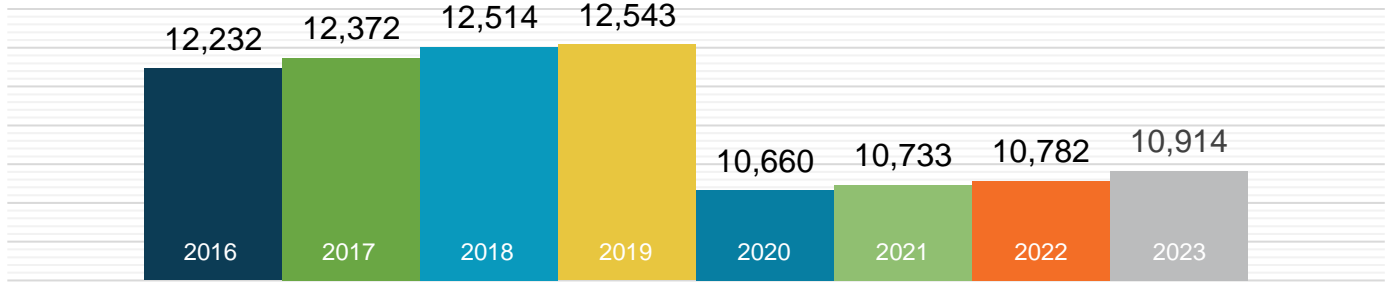
Presented by:



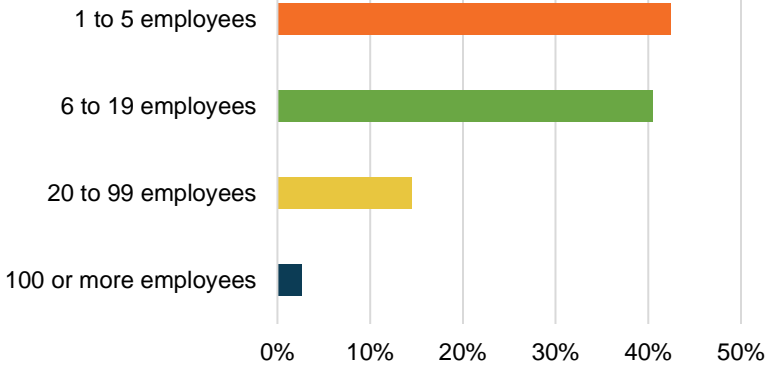
E4 THE FUTURE

What does EE look like in Delaware?

EE Workers Employed in DE



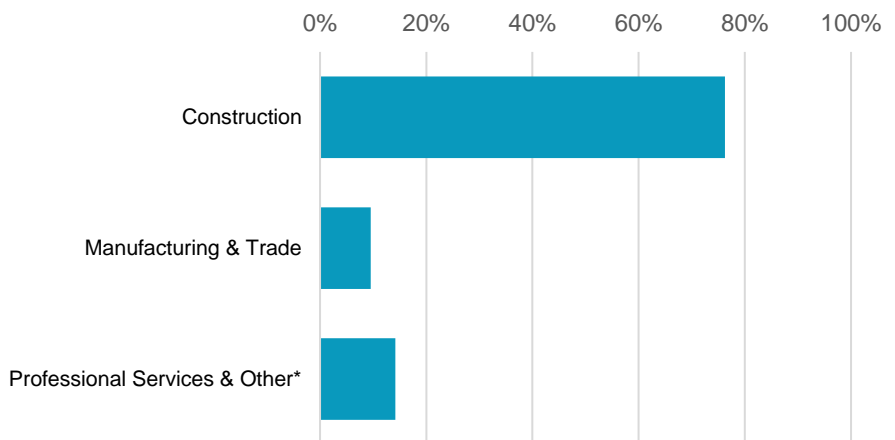
97.4% of DE EE Businesses Have Fewer Than 100 Employees



EE construction workers comprise **35%** of Delaware's construction workforce

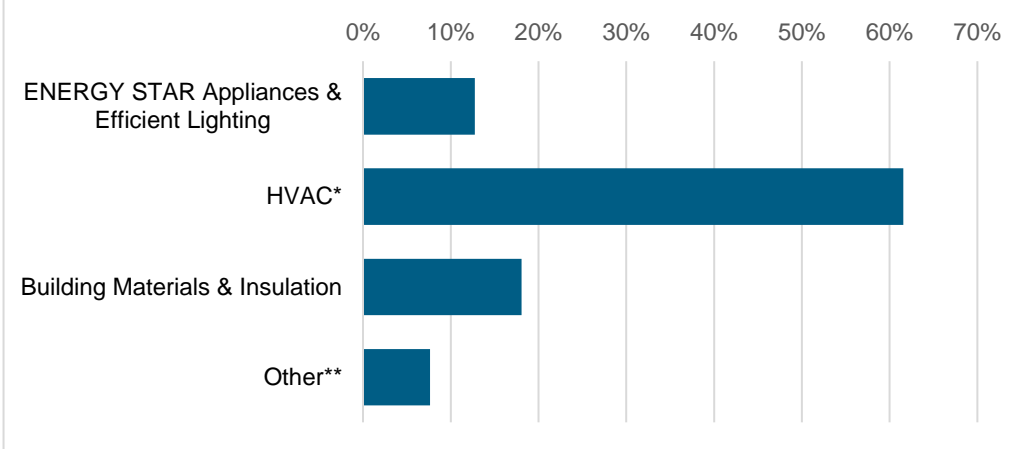


What type of work do energy efficiency firms do?

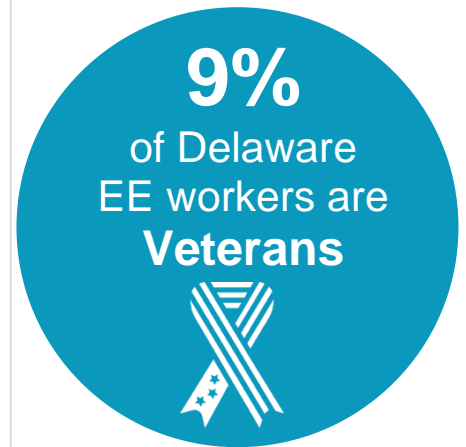


*Professional services include finance/accounting, architecture, engineering, R&D, etc. and other includes maintenance, and business, and nonprofit organizations.

What energy efficiency sectors employ the most workers?



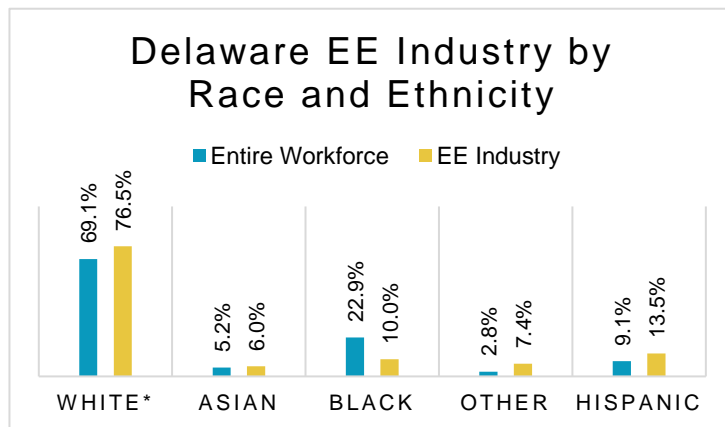
*Heating, ventilation, air conditioning of higher than standard efficiency/renewable heating & cooling
 **Other such as energy audits, building certifications, and software services



How is EE doing on diversity in Delaware?

Demographic data is critical to measure progress in expanding the diversity of the EE industry. A more inclusive industry that reflects the communities it serves is a stronger one that better meets the needs of all U.S. residents. Promoting diversity in hiring is key to maintaining a future workforce of qualified professionals and ensuring all Delaware communities are represented in the EE sector.

The EE industry needs to do more to prioritize minorities and women for training and support that enables access to employment at Delaware businesses.



*Includes non-Hispanic and Hispanic whites.

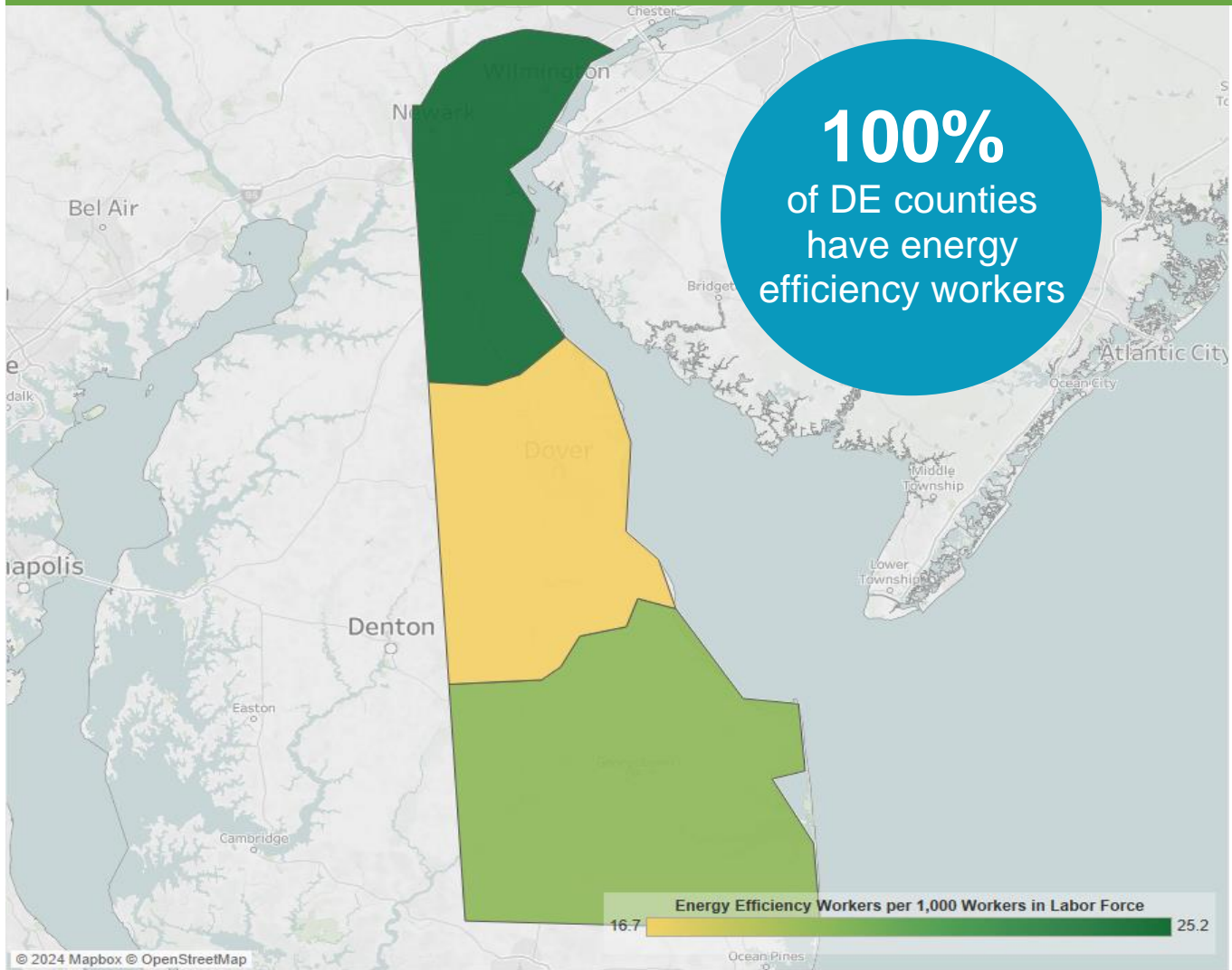
Gender in the Delaware EE Workforce



Note: The U.S. Bureau of Labor Statistics (BLS) only includes two genders in their survey. Non-binary gender data is missing from this document due to this limitation.

Energy Efficiency Jobs are Everywhere

EE Jobs by County



Congressional		Metropolitan Areas	
District	Jobs	Area	Jobs
1	10,914	Dover	1,197
		Philadelphia-Camden-Wilmington	7,652
		Rural	2,065

State Senate							
District	Jobs		District	Jobs		District	Jobs
1	1,383		11	<10		21	202
2	1,648		12	53			
3	477		13	<10			
4	1,121		14	701			
5	218		15	725			
6	1,446		16	317			
7	<10		17	<10			
8	382		18	250			
9	474		19	286			
10	648		20	565			

State House of Representatives				
District	Jobs		District	Jobs
1	784		22	<10
2	2,414		23	28
3	156		24	<10
4	607		25	<10
5	816		26	<10
6	317		27	<10
7	<10		28	366
8	431		29	11
9	190		30	558
10	<10		31	<10
11	549		32	64
12	<10		33	<10
13	<10		34	<10
14	728		35	584
15	52		36	<10
16	<10		37	<10
17	346		38	555
18	<10		39	<10
19	<10		40	64
20	716		41	<10
21	483			





The Building Performance Association (BPA) is a 501(c) 6 nonprofit industry association that serves as the hub for businesses, nonprofits, and government agencies working to make America's homes more comfortable, healthy, and energy efficient. Our mission is to transform the market for the home performance industry through advocacy, education, professional development, and networking. Visit www.building-performance.org.



E4TheFuture is dedicated to bringing clean, efficient energy home for every American and promotes energy solutions to advance climate protection and economic fairness. Visit www.E4TheFuture.org.



BW Research Partnership is a full-service, economic and workforce research consulting firm with offices in Carlsbad, California and Wrentham, Massachusetts. It is the nation's leading provider of accurate, comprehensive energy and clean energy research studies. Visit www.bwresearch.com.

Data Source: Unless otherwise stated, all data are from the U.S. Energy and Employment Report, August 2024, by the U.S. Department of Energy (see Appendix B for methodology details). This methodology — adopted by the U.S. Dept. of Energy for its 2017 U.S. Energy and Employment Report, approved by the Office of Management and Budget and grounded on data collected by the Bureau of Labor Statistics — provides the broadly accepted best accounting of all U.S. energy workers.

For questions on BPA analyses please email: communications@building-performance.org

